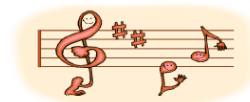


# Lake Shore Central Schools Music Department Calendar 2024 – 2025



| <u>DATE</u>       | <u>DAY</u>         | <u>EVENT</u>  | <u>TIME</u>         | <u>LOCATION</u>           |
|-------------------|--------------------|---|---------------------|---------------------------|
| Sept 10           | Tuesday            | Area All State Registration Deadline                    |                     |                           |
| <b>Oct. 4</b>     | <b>Friday</b>      | <b>Homecoming Events</b>                                | <b>TBA</b>          | <b>Districtwide</b>       |
| Oct. 15           | Tuesday            | ECMEA Choral Pre-Application Deadline                   | 11:59pm             | Da Capo                   |
| Oct. 19           | Saturday           | ECMEA Classroom Music Festival                          | 9:00am              | Windemere Elm.<br>Amherst |
| Nov. 1-2          | Fri., Sat.         | Jr. High Area All-State (Grades 7-9)                    | TBA                 | Akron HS                  |
| <b>Nov. 4</b>     | <b>Monday</b>      | <b>High School Fall Concert (all groups)</b>            | <b>7:00pm</b>       | <b>High School</b>        |
| Nov. 15           | Friday             | ECMEA Solo Registration Deadline                        | 11:59pm             | Da Capo                   |
| Nov. 22-23        | Fri., Sat          | Sr. High Area All-State (Grades 10-12)                  | TBA                 | SUNY Fredonia             |
| Dec. 5-8          | Thurs. - Sun.      | NYSSMA All-State Conference                             | TBA                 | Rochester, NY             |
| <b>Dec. 9</b>     | <b>Monday</b>      | <b>Highland (Grd 5 Band, Orch., Chorus)</b>             | <b>6:30pm</b>       | <b>Highland</b>           |
| <b>Dec. 10</b>    | <b>Tuesday</b>     | <b>A.J. Schmidt (Grd 5 Band, Orch. Chorus)</b>          | <b>6:30pm</b>       | <b>A.J. Schmidt</b>       |
| <b>Dec. 11</b>    | <b>Wednesday</b>   | <b>Middle School Holiday I (Grades 7 &amp; 8)</b>       | <b>7:00pm</b>       | <b>Middle School</b>      |
| <b>Dec. 12</b>    | <b>Thursday</b>    | <b>J.T. Waugh (Grd 5 Band, Orch, Chorus)</b>            | <b>6:30pm</b>       | <b>J.T. Waugh</b>         |
| <b>Dec. 17</b>    | <b>Tuesday</b>     | <b>Middle School Holiday II (Grade 6)</b>               | <b>7:00pm</b>       | <b>Middle School</b>      |
| <b>Dec. 18</b>    | <b>Wednesday</b>   | <b>High School Holiday “Alumni” Concert</b>             | <b>7:00pm</b>       | <b>High School</b>        |
| <i>Dec. 19</i>    | <i>Thursday</i>    | <i>Snow Day Reschedule (if needed)</i>                  | <i>7:00 pm</i>      | <i>TBA</i>                |
| Jan 11            | Saturday           | ECMEA Elementary, Jazz, & Jr. High Vocal Aud.           | TBA                 | Depew MS/HS               |
| Jan 18            | Saturday           | ECMEA Jr. High Instrumental Auditions                   | TBA                 | Orch. Park HS             |
| Jan 22            | Wednesday          | ECMEA Conference Day                                    | 8am-4pm             | Buff. Conv. Ctr.          |
| Jan 25            | Saturday           | ECMEA Sr. High Instr./Vocal Quartet Auditions           | TBA                 | Cleve Hill HS             |
| Jan 28            | Tuesday            | ECMEA Scholarship Auditions                             | TBD                 | Christ United Meth Church |
| Feb 1             | Saturday           | ECMEA Solo Fest Snow Day                                | TBA                 | TBA                       |
| <b>Jan. 23-25</b> | <b>Thurs - Sat</b> | <b>Middle School Musical</b>                            | <b>7:00pm</b>       | <b>Middle School</b>      |
| <b>Feb 6-8</b>    | <b>Thurs - Sat</b> | <b>High School Musical</b>                              | <b>7:00pm</b>       | <b>High School</b>        |
| <b>Feb</b>        | <b>TBA</b>         | <b>4th Grade In-School Informance (Band/Orch)</b>       | <b>TBA</b>          | <b>TBA</b>                |
| March 1,12,14-15  | Sat,Wed, Fri,Sat   | ECMEA Elementary Rehearsals & Concert                   | TBA                 | TBA, Kleinhans            |
| <b>March 6</b>    | <b>Thursday</b>    | <b>Middle School M.I.O.S.M. Showcase (groups TBA)</b>   | <b>7:00pm</b>       | <b>Middle School</b>      |
| March 7-8         | Fri. - Sat.        | ECMEA Junior High Rehearsal & Concert                   | TBA                 | East Aurora HS            |
| <b>March 19</b>   | <b>Wednesday</b>   | <b>High School M.I.O.S.M. Showcase (groups TBA)</b>     | <b>7:00pm</b>       | <b>High School</b>        |
| March 14-15       | Fri. - Sat.        | ECMEA Jazz Ensemble Rehearsal & Concert                 | TBA                 | Cheektowaga               |
| March 21-22       | Fri. - Sat.        | ECMEA Senior High Rehearsal & Concert                   | TBA                 | Univ. at Buff.            |
| <b>April 28</b>   | <b>Monday</b>      | <b>District Jazz Concert</b>                            | <b>6:30pm</b>       | <b>High School</b>        |
| <b>TBA</b>        | <b>TBA</b>         | <b>High School Music Tour</b>                           |                     | <b>New York City</b>      |
| <b>TBD</b>        | <b>TBD</b>         | <b>Elementary Instrumental Recruitment Assembly</b>     | <b>TBD</b>          | <b>TBD</b>                |
| <b>TBD</b>        | <b>TBA</b>         | <b>NYSSMA Solo Auditions &amp; Major Org. Festivals</b> | <b>TBA</b>          | <b>TBD</b>                |
| <b>May 12</b>     | <b>Monday</b>      | <b>All District Elementary Concerts (All Groups)</b>    | <b>6:00, 7:15pm</b> | <b>Middle School</b>      |
| <b>May 19</b>     | <b>Monday</b>      | <b>Orchestra Spring Concert (Grds 6-12)</b>             | <b>7:00pm</b>       | <b>High School</b>        |
| <b>May 22</b>     | <b>Thursday</b>    | <b>Middle School Spring Concert (Band &amp; Chorus)</b> | <b>7:00pm</b>       | <b>Middle School</b>      |
| <b>May 26</b>     | <b>Monday</b>      | <b>Memorial Day Events</b>                              | <b>TBA</b>          | <b>Angola</b>             |
| <b>May 29</b>     | <b>Thursday</b>    | <b>High School Spring Concert (Band &amp; Chorus)</b>   | <b>7:00pm</b>       | <b>High School</b>        |

TBA - “To Be Announced” \* TBD – “To Be Determined” \* District Events in BOLD

# FINAL